

GENERON®

TRITON₂

Sequential PSA Nitrogen Generator

GENERON® Sequential PSA Nitrogen Generators separate nitrogen from compressed air utilizing Pressure Swing Adsorption (PSA) technology. This product line is designed for medium to large flow rates and have a reduced footprint, allowing for minimal space requirements aboard ships and tankers. It consists of multiple pairs of our Twin Tower Adsorber Vessels, air and nitrogen buffer vessels, and operates on alternating cycles.

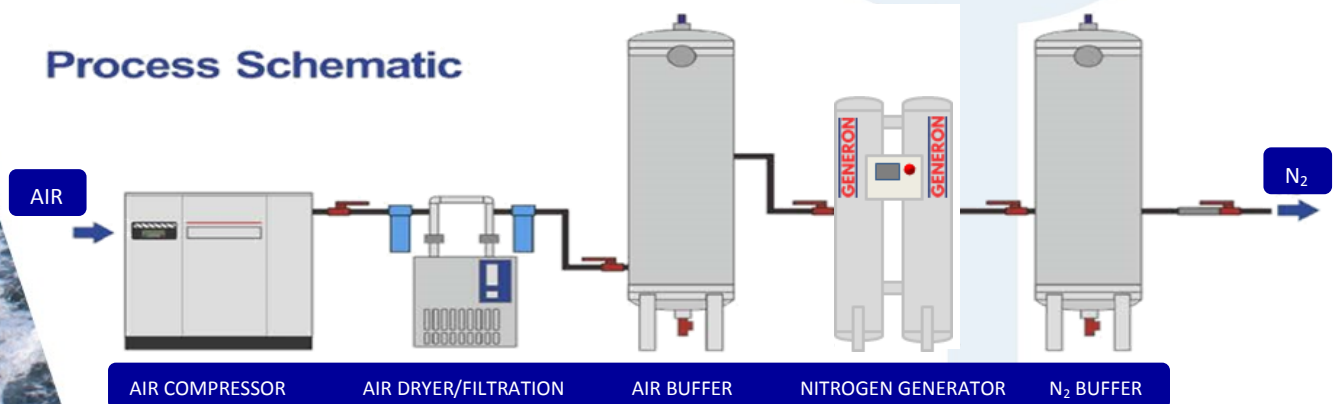
Standard Features:

- Inlet Filtration Package
- Post Filtration Package
- ASME Adsorber Vessels
- Pneumatic / Electric Valves (high cycle life)
- Oxygen Analyzer (with calibration kit)
- Auto Standby mode
- Off Specification Circuit
- Safety Valve
- Nitrogen Pressure Regulator
- PLC Control System
- HMI Display Screen
- Carbon Steel Skid Mounted
- Exhaust Silencing Muffler

Options / Upgrades

- Product Flow Meter
- Auto Shut Down/Startup mode
- Compressed Air Buffer Tank
- Nitrogen Buffer Tank
- Pressure Reducing Cabinet
- Remote Panels for Control Rooms
- Master Controller driven for multiple unit operation
- Enhanced PLC with Telemetry
- Dew Point Analyzer

Process Schematic



GENERON

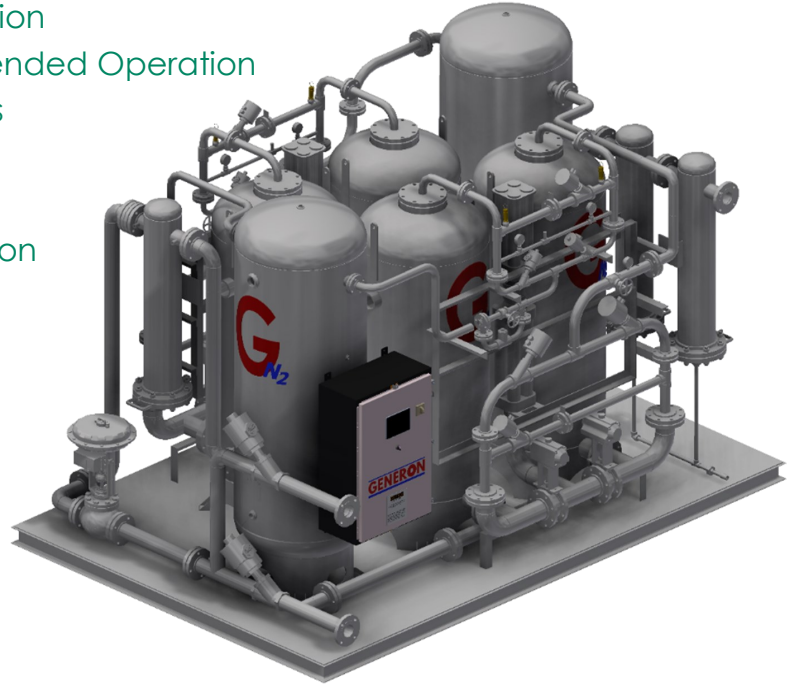
NORWAY

generon-marine.no

GENERON® TRITON₂ - Sequential PSA Nitrogen Generator

Advantages:

- Low Gas Generating Cost
- Low Energy Consumption
- Fully Automatic Unattended Operation
- 2 Million+ Cycle Valves
- Easy Installation
- Low Maintenance
- Heavy Duty Construction
- No Hazardous Storage
- Low dBa Levels



PARAMETERS	Dimensions:	3,660 - 10,160 mm L x 2,440 mm W x 2,750 mm H
	Weight	3,200—103,420 kg
	Power Requirement:	300 - 1,500 WATT @ 230 VAC Supply
	Inlet Air Connection:	3" (DN 75) - 6" (DN 150) 150# RF
	N₂ Outlet Connection:	2" (DN 50) - 4" (DN 100) 150# RF

Product	Model Size	psig	barg	Nitrogen Purity / Flow Rate									
				97%		99%		99.90%		99.99%		99.999%	
				scfm	Nm ³ /h	scfm	Nm ³ /h	scfm	Nm ³ /h	scfm	Nm ³ /h	scfm	Nm ³ /h
	2xNS-20-65	90 to 145	6.2 to 10	171-292	271-463	126-207	200-329	72-108	115-171	49-58	77-93	25-21	41-33
	2xNS-24-64	90 to 145	6.2 to 10	246-420	390-665	181-298	288-472	104-155	165-246	70-84	111-133	37-30	59-48
	2xNS-30-56	90 to 145	6.2 to 10	341-582	541-922	252-413	399-654	144-215	229-341	98-117	155-185	51-42	81-66
	2xNS-36-56	90 to 145	6.2 to 10	496-846	786-1340	366-600	579-951	210-313	333-495	142-170	225-269	75-61	118-97
	3xNS-36-56	90 to 145	6.2 to 10	745-1269	1179-2010	549-901	869-1427	315-469	500-743	213-255	338-404	112-92	178-146
	4xNS-36-56	90 to 145	6.2 to 10	993-1692	1572-2680	732-1201	1159-1902	421-626	666-991	284-340	450-539	150-122	237-194
	5xNS-36-56	90 to 145	6.2 to 10	1241-2116	1965-3350	915-1502	1449-2378	526-783	833-1239	356-425	563-673	187-153	297-243
	6xNS-36-56	90 to 145	6.2 to 10	2483-4232	3931-6700	1831-3004	2899-4757	1052-1566	1666-2479	712-851	1127-1347	375-307	594-486

The nominal rating of the generators are at 68°F (20°C), 0% RH and at 14.696 psi (1 atm).
Flow and pressure values are averages throughout a cycle with tolerances of ±4%. Custom sizes are available upon request.

GENERON

GENERON USA
16250 Tomball Parkway
Houston, Texas 77086
O - +1 .713. 937.5200
F - +1 .713. 937.5250
www.generon.com

